



SHINING 3D

EN

FOR MORE  
SHINING IDEAS



All-in-one 3D Scanning Solutions from SHINING 3D  
Empowering High-accuracy 3D Design and Inspection

# FOR MORE **SHINING** IDEAS

Since its establishment in 2004, SHINING 3D has been operating at the forefront of 3D digital technological innovation. With extensive experience in developing 3D digitizing technologies, we design state-of-the-art hardware and software to cater the needs of numerous industries and applications. This synergy positions SHINING 3D as the one-stop partner for comprehensive 3D scanning, design, and inspection solutions.

To date, SHINING 3D products have become reliable tools for individuals, corporations and large organizations across the globe for a wide range of industries and applications. Our ability to listen to our customers' needs and incorporate their requirements directly into the product development process allows us to constantly innovate and challenge the impossible.

Staying true to our goal of making it efficient and easy for everyone to complete their 3D projects in a digital production workflow, our products are easy to use and access.

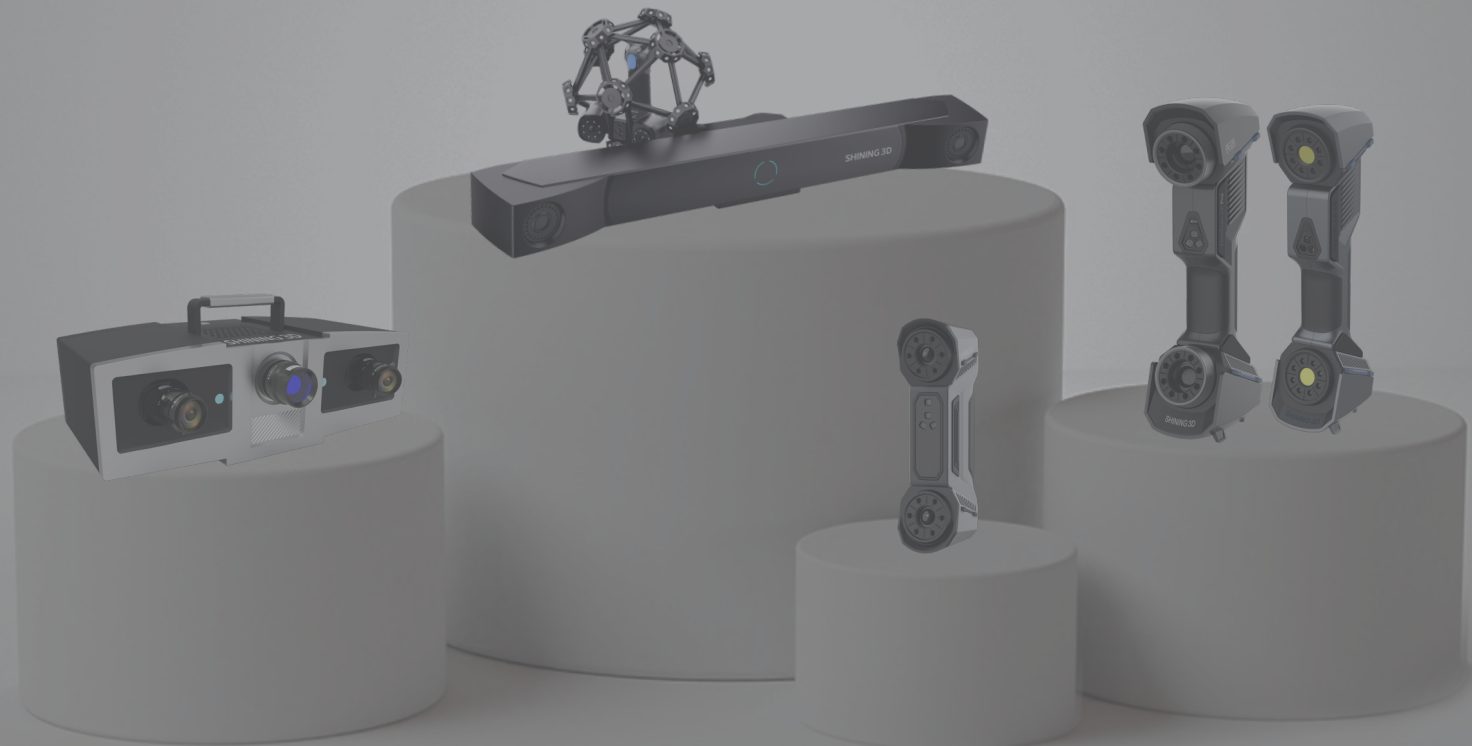
Thousands of 3D scanners sold worldwide express SHINING 3D's international popularity, reliability and reputation.

Our regional offices serve our customers in the APAC region (Hangzhou, China), the European region (Stuttgart, Germany) and the Americas region (San Francisco, CA and Tampa, FL, USA). A growing network of specialized dealers and distribution partners ensures the availability of SHINING 3D technology in local markets.



# 3D Metrology

GOING BEYOND PRECISION



SHINING 3D's line of diverse high-end metrology 3D digitizing products is designed to meet the needs of the most demanding customers and most challenging applications. From the tiniest screw to the biggest rocket engine – SHINING 3D's metrology solutions got you covered for your high-precision acquisition of authentic 3D data, reverse engineering and quality control.

# KEY FEATURES

## **RELIABLE**

Consistent results guarantee the quality of acquired data. With dedicated warranty plans, customers can secure constant productivity and ongoing efficiency. The international support team is available for customers around the globe.

## **CERTIFIED**

SHINING 3D's metrology products undergo rigorous measurements and are certified in an Accuracy Laboratory accredited by ISO 17025, which meets the VDI/VDE 2634 part 3 standard.

## **PROFESSIONAL**

To date, SHINING 3D Metrology products are applied in a diverse field of industries supporting engineers and quality managers to tackle the most challenging applications along the digital engineering and inspection workflow.

## **EASY TO USE**

All devices of the SHINING 3D Metrology line are easy to operate and combined with assistive 3D scanning software guiding the user through the whole setup and data acquisition workflow. The system is open and compatible with all major 3D processing and inspection software in the market, so that users can easily integrate the SHINING 3D Metrology device into their already existing workflow. Thanks to the easy handling, complicated and time-consuming training becomes obsolete as users can get started with scanning upon unboxing.

---

# FreeScan Trak Pro2

## OPTICAL COORDINATE MEASURING

---

Optical Coordinate Measuring Systems capture the spatial position of a scanned structure in real time, offering a portable, efficient and reliable 3D measurement solution. The system helps the operator to avoid the application of reference points and thus enables a simple acquisition of medium to large-sized objects' 3D data with metrology-grade accuracy.

Suitable for various static and dynamic applications, it is the ideal tool for large-scale 3D inspection in all kinds of industrial environments.



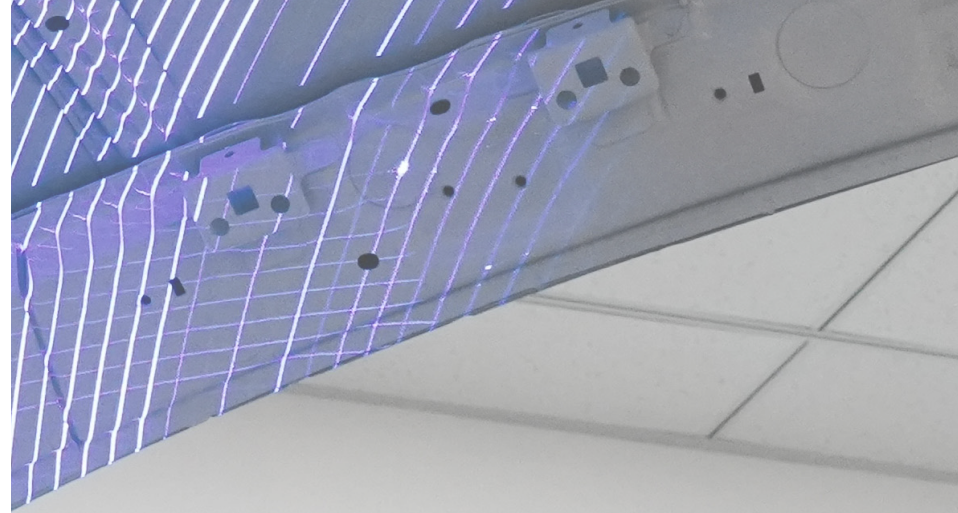
### FreeScan Trak Pro2

PORTABLE CMM  
SCANNING SYSTEM



### FreeProbe

PORTABLE PROBING SYSTEM



**EAN NO.** 6970163081632

6970163081649

<b>TECHNOLOGY</b>	50 laser lines (25 laser crosses), 7 parallel laser lines, single laser line	/
<b>ACCURACY</b>	0.023 mm + 0.015 mm/m (0.0009 in + 0.00018 in/ft)	0.025 mm (0.00098 in)
<b>POINT DISTANCE</b>	0.01 ~10 mm (0.0003 ~ 0.3937 in)	/
<b>COLOR</b>	No	No
<b>FIXMODE</b>	No	No
<b>ACCURACY</b>		
<b>RESOLUTION/DETAILS</b>		/
<b>SPEED</b>		
<b>OBJECT SIZE</b>	 small big	 small big
<b>USER LEVEL</b>	 beginner professional	 beginner professional





---

# FreeScan Series

FREEDOM FOR YOUR BUSINESS

---

The FreeScan brand has a proven track record of capturing 3D data with high precision and accuracy. Simultaneously, its light weight and ergonomically formed silhouette make it easy to hold and operate.

FreeScan is the ideal device for metrology-grade high-accuracy inspection solutions in all types of industrial engineering and inspection applications. Opting for FreeScan means opting for freedom of materials that can be scanned, sizes of objects to be tamed and catching all details digitally.







### FreeScan Combo

BLUE LASER HANDHELD 3D SCANNER



### FreeScan Combo+

BLUE LASER HANDHELD 3D SCANNER



### FreeScan UE Pro

BLUE LASER HANDHELD 3D SCANNER



### FreeScan Trio

FIRST MARKER-FREE LASER 3D SCANNER

EAN NO.	6970163080598	6970163081809	6970163088983	6970163088983
---------	---------------	---------------	---------------	---------------

TECHNOLOGY	26 Blue Laser Lines 7 Hyperfine Laser Lines Single Blue Laser Line IR Scan	50 Blue Laser Lines 7 Hyperfine Laser Lines Single Blue Laser Line IR Scan	26 Blue Laser Lines 7 Hyperfine Laser Lines Single Blue Laser Line	98 Markerless Blue Laser Lines 26 Blue Laser Lines 7 Hyperfine Laser Lines Single Blue Laser Line
ACCURACY	Up to 0.02 mm (0.0007 in)	Up to 0.02 mm (0.0007 in)	Up to 0.02 mm (0.0007 in)	Up to 0.02 mm (0.0007 in)
POINT DISTANCE	0.05 ~ 10 mm (0.0019 ~ 0.3937 in)	0.05 ~ 10 mm (0.0019 ~ 0.3937 in)	0.01 ~ 10 mm (0.0003 ~ 0.3937 in)	0.01 ~ 3 mm (0.0003 ~ 0.1181 in)
COLOR	No	No	No	No
MARKER FREE SCANNING	Yes IR mode	Yes IR mode	No	Yes 98 laser lines mode
PHOTOGRAMMETRY	No	No	Yes	Yes
ACCURACY				
RESOLUTION/DETAILS				
SPEED				
OBJECT SIZE				
USER LEVEL				

---

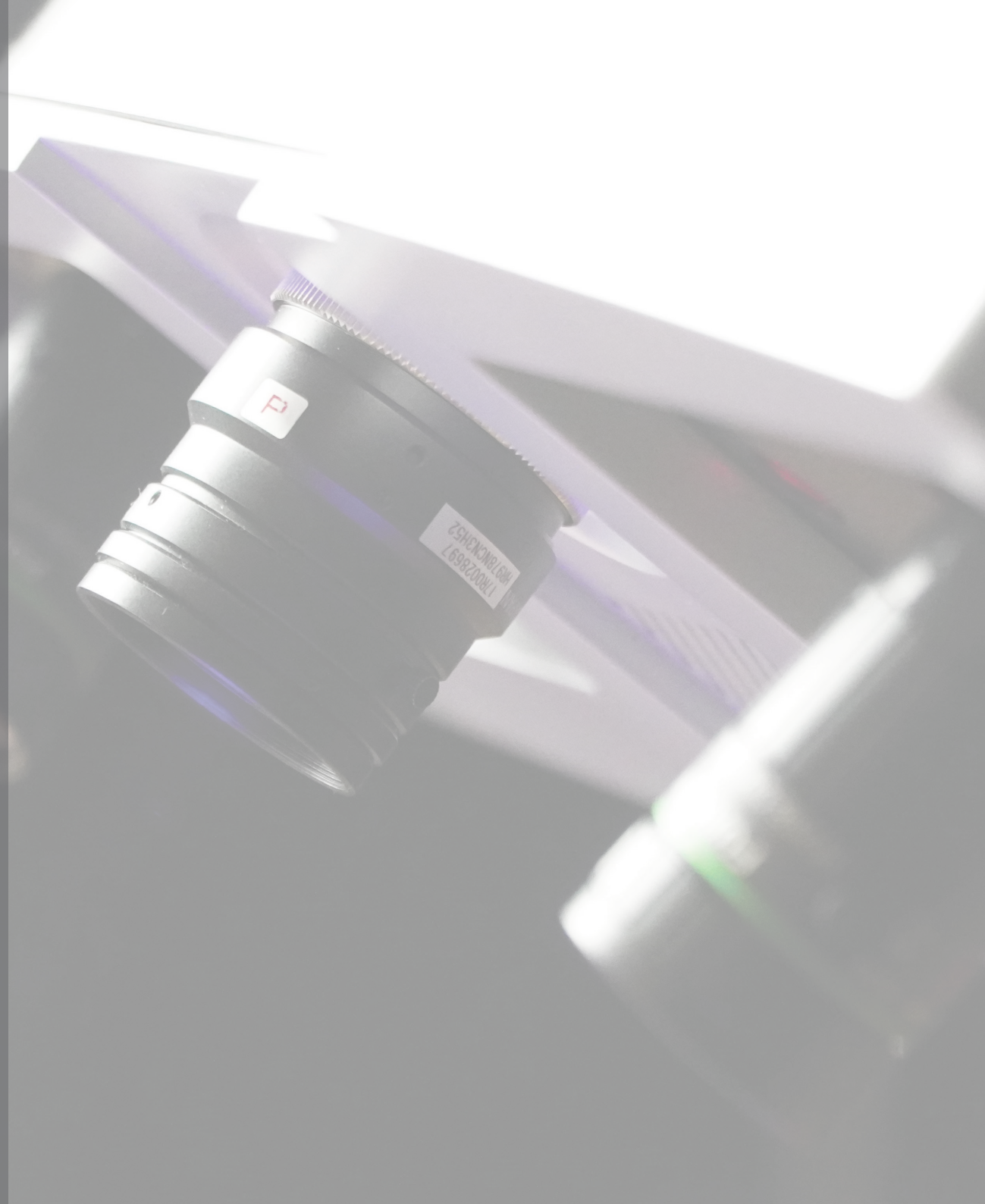
# High-Precision 3D Scanning

ALL ABOUT THE DETAILS

---

Blue Light Metrology 3D scanning technology is able to precisely capture small and filigree details of tiny to medium-sized objects, rigidly requiring persistent performance in their product lifecycle.

High-Precision 3D scanners from the SHINING 3D Blue Light Metrology line-up are the ideal assistants for fast and efficient single piece capturing, but also for integration in automated factory workflows.





## OptimScan 5M Plus

HIGH-PRECISION  
3D INSPECTION SCANNER

EAN NO. 6970163089720

TECHNOLOGY Structured Light (Blue)

ACCURACY Up to 0.005 mm (0.00019 in)

POINT DISTANCE Up to 0.04 mm (0.0015 in)

COLOR No

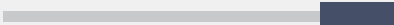
FIXMODE Supported

ACCURACY 

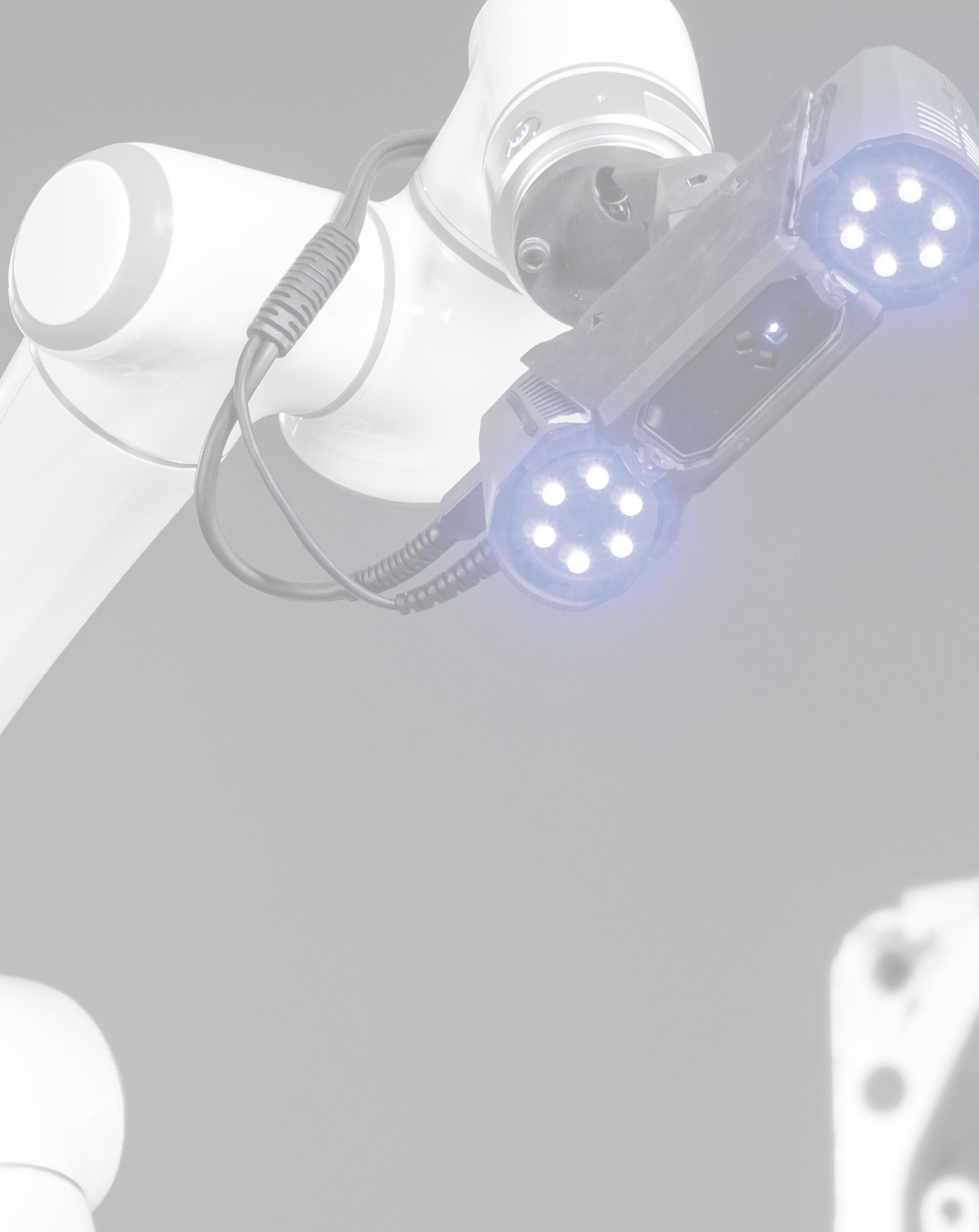
RESOLUTION/DETAILS 

SPEED 

OBJECT SIZE  small big

USER LEVEL  beginner professional





---

# Automated Solutions

WITH SHINING 3D SCANNERS

---

Automating 3D scanning processes has clear advantages. By replacing manual tasks with automated methods, it ensures precision and boosts efficiency. This expedites digitizing complex objects, saving time and cost. Automation drastically simplifies design changes or replication.

In quality control, it ensures consistent, unbiased measurements. 3D scanners capture fine details with minimal human intervention, speeding inspections and reducing errors. Through partnerships with leading automation providers, SHINING 3D delivers integrated, efficient automated 3D scanning solutions for diverse applications



## D3 Inspect

FULLY AUTOMATIC  
COMPONENT MEASUREMENT

EAN NO.

TECHNOLOGY Laser and IR

ACCURACY Up to 0.02 mm (0.0007 in)

POINT DISTANCE 0.05 mm (0.0019 in)

COLOR No

FIXMODE Supported

ACCURACY

RESOLUTION/DETAILS

SPEED

OBJECT SIZE   
small big

USER LEVEL   
beginner professional



# EinScan

SIMPLE, VERSATILE & EFFICIENT



EinScan embodies simple operation and versatile application in a highly efficient 3D scanning device. Since the launch of the first EinScan 3D scanner in 2015, EinScan has become the go-to 3D scanner brand for many different user groups, from makers and small businesses to engineering departments in multinational companies.

# KEY FEATURES

## **EASY TO USE**

EinScan 3D scanners are easy to use, for non-technical and professional users alike. Every step of the 3D scanning workflow is guided by the software and accompanied by clear instructions.

## **HIGH SPEED**

3D data can be captured quickly and easily.

## **HIGH ACCURACY**

All EinScan 3D scanners boast extraordinary accuracy capacities in their respective range.

## **SUPPORT COLOR / TEXTURE SCAN**

Acquire vivid color/texture with the EinScan scanners.

## **UNLIMITED SEATS**

Install the EXScan Software on as many computers as you want and benefit from consistent updates.

## **COMPATIBLE WITH 3D PRINTERS AND MAINSTREAM DESIGN & MODELING SOFTWARE**

The EXScan software has all the relevant data output formats to accommodate further data processing with a broad range of design, engineering, inspection and 3D printing software.

---

# EinScan H Series

H FOR HYBRID

---

The EinScan H Series of Hybrid Light source Handheld 3D Scanners innovatively integrate the proven EinScan LED light scanning technology with a second light source predestining the devices for a broader range of challenging applications.

The hybrid laser and LED light sources make EinScan HX compatible with a wider range of object sizes, meeting multiple needs of users. High efficiency and reliable result give EinScan HX more application possibilities.

The EinScan H2 improves on its predecessor with a 5MP resolution texture camera, enhanced accuracy, and 3 infrared VCSEL projectors for more photorealistic textures and better-quality data.





## EinScan HX

HYBRID BLUE LASER & LED  
LIGHT SOURCE HANDHELD 3D SCANNER



## EinScan H2

HIGH TEXTURE RESOLUTION  
HANDHELD HYBRID 3D SCANNER

**EAN NO.** 6970163080604

**EAN NO.** 6970163084121

**TECHNOLOGY** Structured Light,  
7 Blue Laser Crosses

**TECHNOLOGY** Structured Light,  
Infrared Light

**ACCURACY** Up to 0.04 mm (0.0015 in)

**ACCURACY** Up to 0.05 mm (0.0019 in)

**POINT DISTANCE** 0.05 ~ 3 mm  
(0.0019 ~ 0.1181 in)

**POINT DISTANCE** 0.2 ~ 3 mm  
(0.0078 ~ 0.1181 in)

**COLOR** Yes

**COLOR** Yes (high resolution)

**FIXMODE** No

**FIXMODE** No

**ACCURACY**



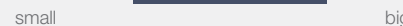
**RESOLUTION/DETAILS**



**SPEED**



**OBJECT SIZE**



**USER LEVEL**





---

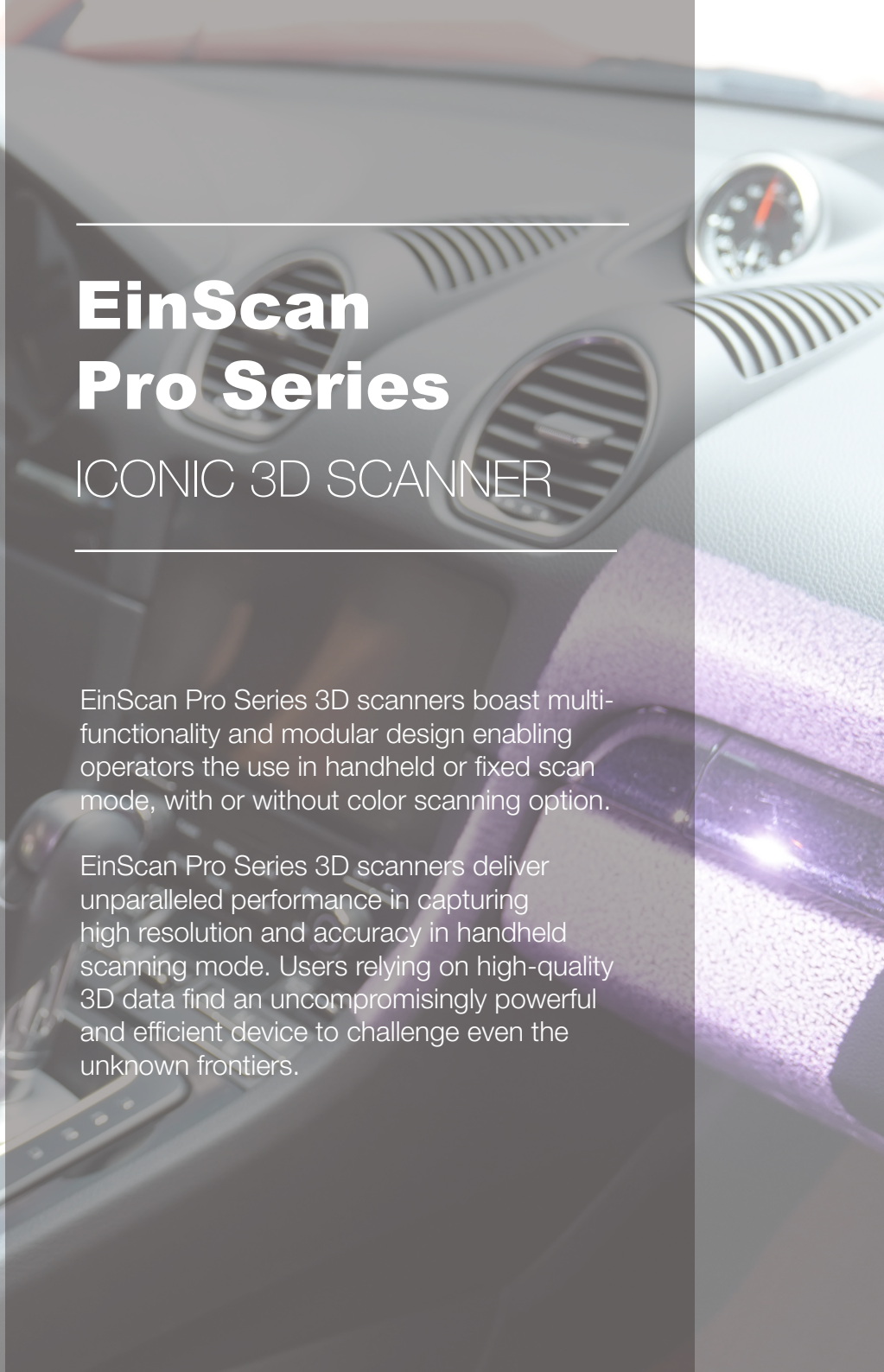
# EinScan Pro Series

## ICONIC 3D SCANNER

---

EinScan Pro Series 3D scanners boast multi-functionality and modular design enabling operators the use in handheld or fixed scan mode, with or without color scanning option.

EinScan Pro Series 3D scanners deliver unparalleled performance in capturing high resolution and accuracy in handheld scanning mode. Users relying on high-quality 3D data find an uncompromisingly powerful and efficient device to challenge even the unknown frontiers.





### EinScan Pro HD

MULTIFUNCTIONAL HANDHELD  
3D SCANNER



### EinScan Pro 2X V2

MULTIFUNCTIONAL HANDHELD  
3D SCANNER

**EAN NO.** 6970163080956

6970163081663

**TECHNOLOGY** Structured Light

Structured Light

**ACCURACY** Up to 0.04 mm(0.0015 in)

Up to 0.04 mm (0.0015 in)

**POINT DISTANCE** 0.2 ~ 3 mm  
(0.0078 ~ 0.1181 in)

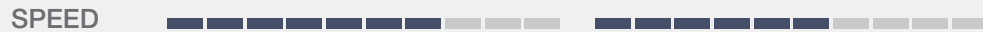
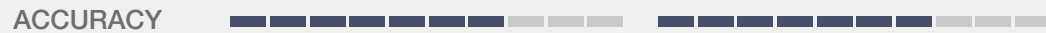
0.16 ~ 2 mm  
(0.0062 ~ 0.0787 in)

**COLOR** Yes (with color pack)

Yes (with color pack)

**FIXMODE** Supported with Industrial Pack

Supported with Industrial Pack



---

# Transcan C

FOR YOUR  
APPLICATION NEEDS

---

Striving to empower 3D digital applications for everybody, SHINING 3D is developing solutions answering the market's needs.

Transcan C enables full color and high resolution 3D scanning.





## Transcan C

MULTIPLE SCAN RANGE  
COLOR 3D SCANNER

**EAN NO.** 6970163084336

**TECHNOLOGY** White LED Light

**ACCURACY** 0.035 mm (0.0013 in)

**POINT DISTANCE** Up to 0.0375 mm (0.0014 in)

**COLOR** Yes

**FIXMODE** Supported

**ACCURACY** 

**RESOLUTION/DETAILS** 

**SPEED** 

**OBJECT SIZE**   
small big

**USER LEVEL**   
beginner professional



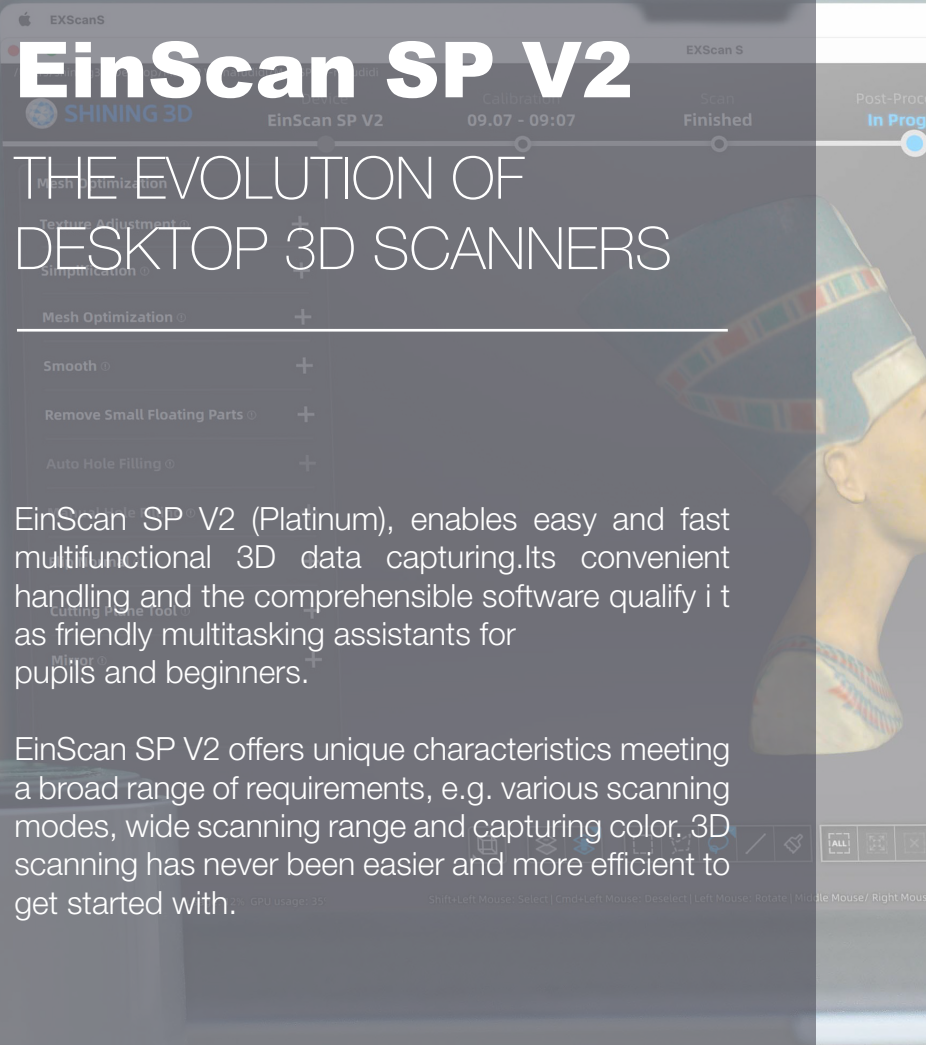


# EinScan SP V2

## THE EVOLUTION OF DESKTOP 3D SCANNERS

EinScan SP V2 (Platinum), enables easy and fast multifunctional 3D data capturing. Its convenient handling and the comprehensible software qualify it as friendly multitasking assistants for pupils and beginners.

EinScan SP V2 offers unique characteristics meeting a broad range of requirements, e.g. various scanning modes, wide scanning range and capturing color. 3D scanning has never been easier and more efficient to get started with.





## EinScan SP V2

THE EXPERT CHOICE WITH  
ENHANCED EXPERIENCE

**EAN NO.** 6970163088129

**TECHNOLOGY** Structured Light

**ACCURACY** 0.05 mm (0.0019 in)

**POINT DISTANCE** 0.17 mm ~ 0.2 mm  
(0.0066 ~ 0.0078 in)

**COLOR** Yes


**FIXMODE** Supported

**ACCURACY** 

**RESOLUTION/DETAILS** 

**SPEED** 

**OBJECT SIZE**   
small big

**USER LEVEL**   
beginner professional





---

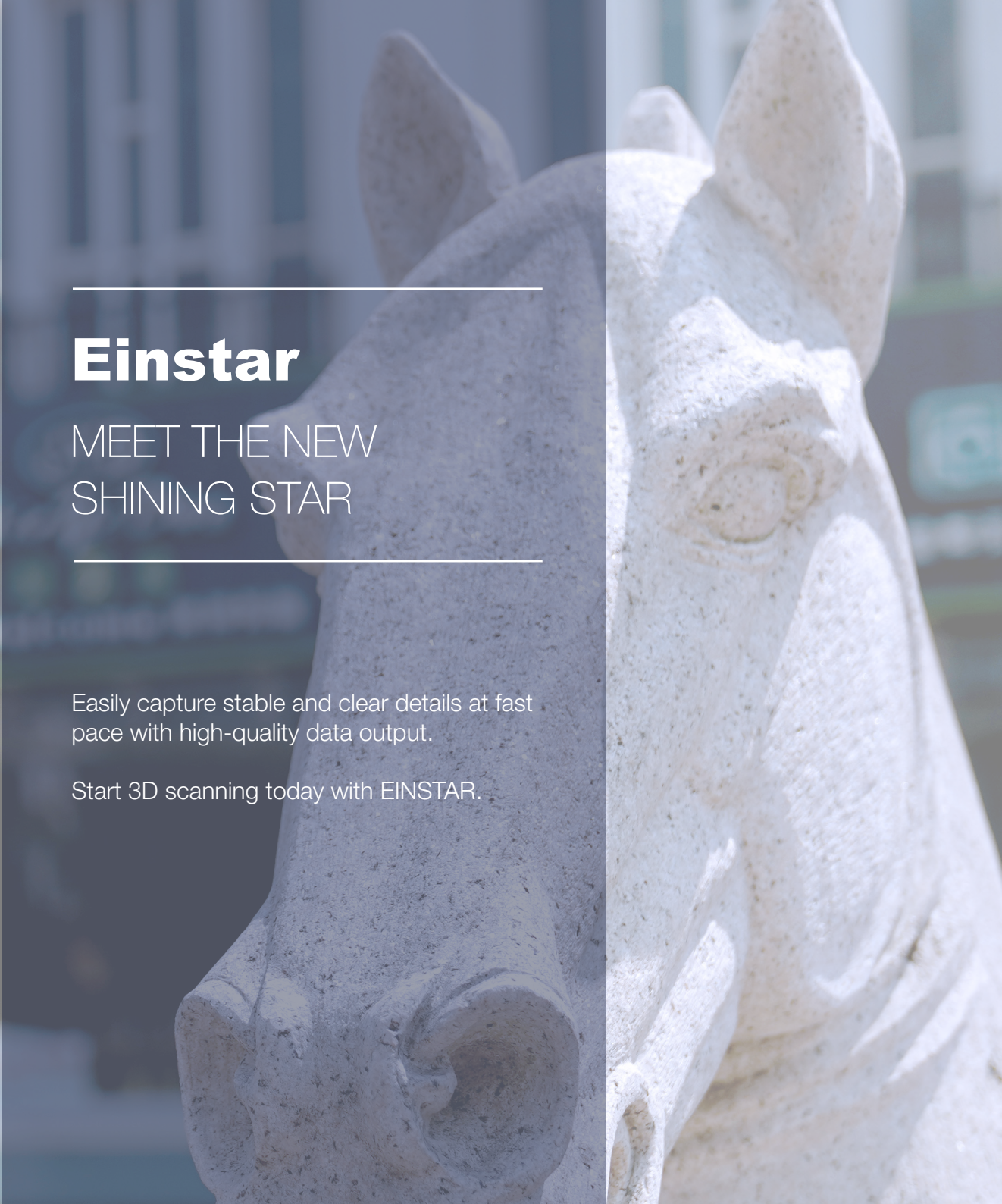
# Einstar

MEET THE NEW  
SHINING STAR

---

Easily capture stable and clear details at fast pace with high-quality data output.

Start 3D scanning today with EINSTAR.







**Einstar**  
3D SCANNER

**EAN NO.** 6970163080529

**TECHNOLOGY** Infrared VCSEL  
structured light


**POINT DISTANCE** 0.1 ~ 3 mm  
(0.0039 ~ 0.1181 in)

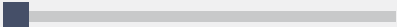
**COLOR** Yes

**ACCURACY** 

**RESOLUTION/DETAILS** 

**SPEED** 

**OBJECT SIZE**   
small big

**USER LEVEL**   
beginner professional



# 3D Scanning Software

TAILORED TO YOUR NEEDS

What's excellent 3D data without the software to get the best out of it for your digital manufacturing projects!? That's why SHINING 3D has been partnering with top tier software partners to provide you with an all-in-one solution from data acquisition to data processing. From Reverse Engineering, through Inspection, to Software for O&P: we offer a broad portfolio of software solutions to round off the capacities of your SHINING 3D scanner!



EXModel

Geomagic Design X

APPLICATION	Design & Reverse Engineering	Reverse Engineering
POINT CLOUD & MESH EDITING	██████████	██████████
REVERSE ENGINEERING	██████████	██████████
INSPECTION	██████████	██████████
DESIGN	██████████	██████████
BODY MEASUREMENT	██████████	██████████



Geomagic  
Control X

Polyworks

Verisurf

TechMed  
MSoft

APPLICATION

3D Inspection

Inspection & Reverse  
Engineering

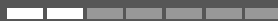
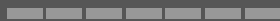
Inspection & Reverse  
Engineering

Human Body 3D  
Measurement

POINT CLOUD &  
MESH EDITING



REVERSE  
ENGINEERING



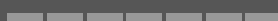
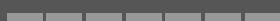
INSPECTION



DESIGN



BODY  
MEASUREMENT





Scan The QR Code To  
View The Digital Version

